

# Minnesota Career Fields and Clusters Wheel

The Minnesota Career Fields and Clusters Wheel provides alignment and a common language that bridges education and work, empowering individuals to explore options, make informed decisions, and prepare for dynamic and evolving careers. Updated 2026.

## Career Fields (5)

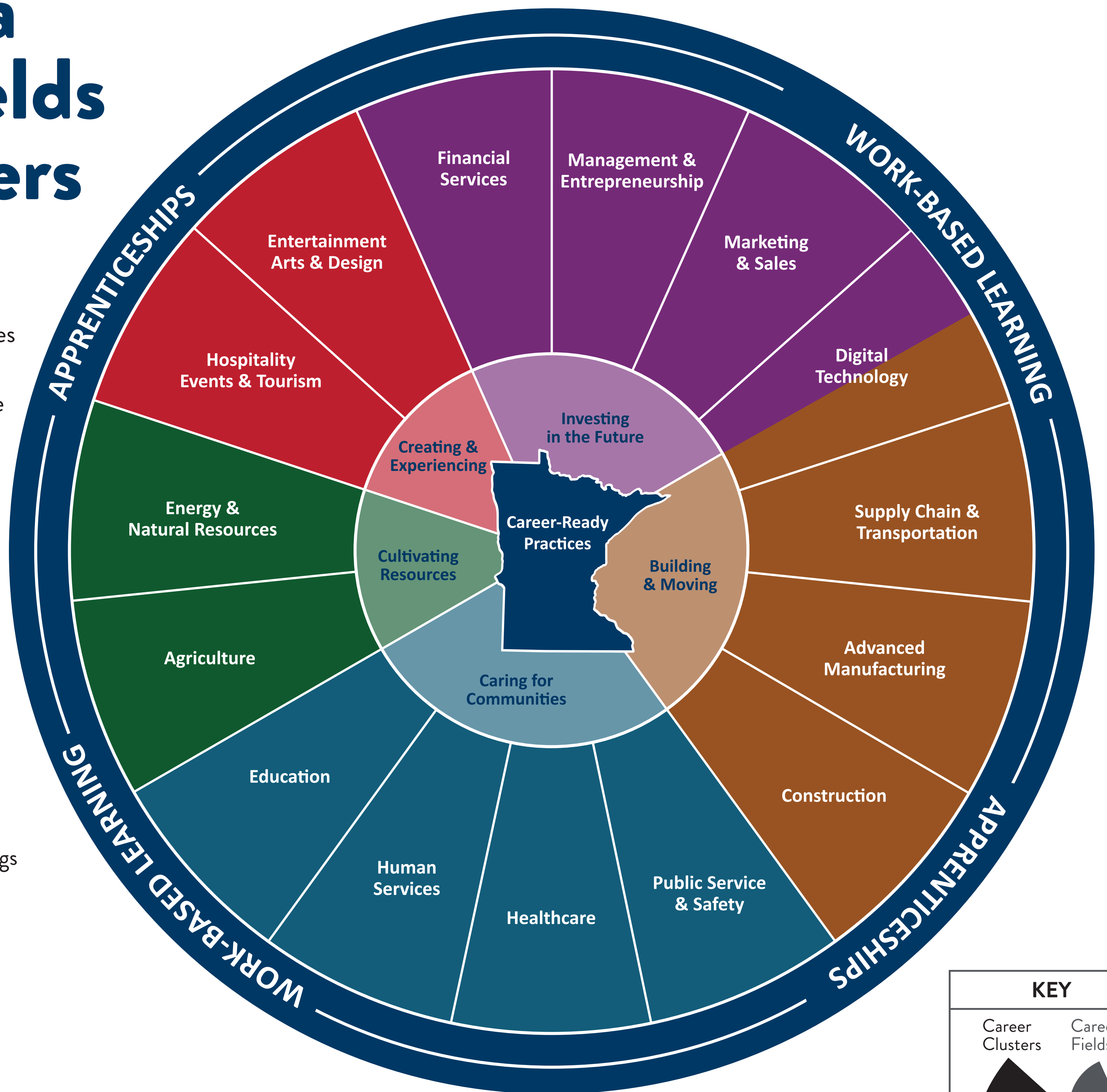
Large purpose-driven sectors that help guide learners toward Clusters that are aligned with their interests, their sense of purpose, and the impact they want to make.

## Career Clusters (15)

Industry sectors as defined by groupings from Standard Occupations Classification and North American Industry Classification System codes. Work-Based Learning and Apprenticeships are integral to all clusters.

## Work-Based Learning & Apprenticeships

Structured programs that connect education with real-world work, using hands-on experience to build skills through learning on the job.



KEY	
Career Clusters	Career Fields

**Career Ready Practices** are professional competencies identified by industry and education partners that individuals need to succeed in the workplace. These practices should be intentionally developed from early learning through adulthood.

- Lead as a reliable and professional employee
- Communicate clearly and with purpose
- Think critically and follow through on solutions
- Collaborate productively while demonstrating cultural and global awareness
- Use digital tools to work efficiently and make informed decisions
- Stay adaptable when work or conditions change
- Manage time and workspace effectively
- Demonstrate a creative and innovative mindset
- Manage finances and resources responsibly
- Plan education and career paths based on strengths, work style, interests, and goals
- Consider how decisions affect people and the environment
- Apply appropriate academic and technical skills

**Programs of Study (POS)** are structured pathways that connect academic learning with career and technical education, enabling secondary and postsecondary students to prepare for advanced training and/or direct entry into the workforce. POS connect industry representatives and education partners to align learning with current and future workforce needs, helping build a responsive, sustainable pipeline of prepared, diverse talent. **POS within each career cluster on the Minnesota Career Fields and Clusters wheel include:**

<b>Cultivating Resources</b>	<b>Cultivating Resources</b>	<b>Creating &amp; Experiencing</b>	<b>Creating &amp; Experiencing</b>
<b>Agriculture</b> <ul style="list-style-type: none"> <li>• Agribusiness</li> <li>• Agricultural Technology &amp; Automation</li> <li>• Animal Systems</li> <li>• Food Science &amp; Processing</li> <li>• Plant Systems</li> <li>• Water Systems</li> </ul>	<b>Energy &amp; Natural Resources</b> <ul style="list-style-type: none"> <li>• Clean &amp; Alternative Energy</li> <li>• Conservation &amp; Land Management</li> <li>• Ecological Research &amp; Development</li> <li>• Environmental Protection</li> <li>• Resource Extraction</li> <li>• Utilities</li> </ul>	<b>Hospitality, Events &amp; Tourism</b> <ul style="list-style-type: none"> <li>• Accommodations</li> <li>• Conferences &amp; Events</li> <li>• Culinary and Food Services</li> <li>• Travel &amp; Leisure</li> </ul>	<b>Entertainment, Art &amp; Design</b> <ul style="list-style-type: none"> <li>• Design &amp; Digital Arts</li> <li>• Fashion &amp; Interiors</li> <li>• Lighting &amp; Sound Technology</li> <li>• Media Production &amp; Broadcasting</li> </ul>
<b>Investing in the Future</b>	<b>Investing in the Future</b>	<b>Investing in the Future</b>	<b>Investing in the Future</b>
<b>Financial Services</b> <ul style="list-style-type: none"> <li>• Accounting</li> <li>• Banking &amp; Credit</li> <li>• Financial Strategy &amp; Investments</li> <li>• Insurance</li> <li>• Real Estate</li> </ul>	<b>Management &amp; Entrepreneurship</b> <ul style="list-style-type: none"> <li>• Business Information Management</li> <li>• Entrepreneurship &amp; Small Business</li> <li>• Leadership &amp; Operations</li> <li>• Project Management</li> <li>• Regulation</li> </ul>	<b>Marketing and Sales</b> <ul style="list-style-type: none"> <li>• Market Research, Analytics, &amp; Ethics</li> <li>• Marketing &amp; Advertising</li> <li>• Retail &amp; Customer Experience</li> <li>• Strategic Sales</li> </ul>	<b>Digital Technology</b>
			<ul style="list-style-type: none"> <li>• Data Science &amp; AI</li> <li>• IT Support &amp; Services</li> <li>• Network Systems &amp; Cybersecurity</li> <li>• Software Solutions</li> <li>• Web and Cloud</li> <li>• Uncrewed Vehicle Technology</li> </ul>
<b>Building &amp; Moving</b>	<b>Building &amp; Moving</b>	<b>Building &amp; Moving</b>	<b>Caring for Communities</b>
<b>Supply Chain &amp; Transportation</b> <ul style="list-style-type: none"> <li>• Air &amp; Space Transportation</li> <li>• Ground &amp; Rail Transportation</li> <li>• Maintenance &amp; Repair</li> <li>• Marine Transportation</li> <li>• Planning &amp; Logistics</li> <li>• Purchasing &amp; Warehousing</li> </ul>	<b>Advanced Manufacturing</b> <ul style="list-style-type: none"> <li>• Engineering</li> <li>• Industrial Machinery</li> <li>• Production &amp; Automation</li> <li>• Robotics</li> <li>• Safety &amp; Quality Assurance</li> </ul>	<b>Construction</b> <ul style="list-style-type: none"> <li>• Architecture &amp; Civil Engineering</li> <li>• Equipment Operation &amp; Maintenance</li> <li>• Skilled Trades</li> <li>• Construction Planning &amp; Development</li> </ul>	<b>Public Service &amp; Safety</b> <ul style="list-style-type: none"> <li>• Emergency Response</li> <li>• Military &amp; National Security</li> <li>• Public Safety</li> <li>• Judicial Systems</li> <li>• Local, State, &amp; Federal Services</li> </ul>
<b>Caring for Communities</b>	<b>Caring for Communities</b>	<b>Caring for Communities</b>	
<b>Healthcare</b> <ul style="list-style-type: none"> <li>• Biotechnology Research &amp; Development</li> <li>• Health Data &amp; Administration</li> <li>• Physical Health</li> </ul>	<b>Human Services</b> <ul style="list-style-type: none"> <li>• Behavioral &amp; Mental Health</li> <li>• Community &amp; Social Services</li> <li>• Personal Care Services</li> </ul>	<b>Education</b> <ul style="list-style-type: none"> <li>• Early Childhood Development</li> <li>• Learner Support &amp; Community Engagement</li> <li>• Teaching, Training, &amp; Facilitation</li> <li>• Education Administration &amp; Leadership</li> </ul>	



<https://education.mn.gov/MDE/dse/cte/>



<https://www.minnstate.edu/system/cte/>