



**NORTHEAST**  
*SERVICE COOPERATIVE*

**2025**

# Annual Plan

*Serving Schools, Cities, and other Governmental Agencies in Northeastern Minnesota*

**NORTHEAST SERVICE COOPERATIVE**

Tel 218-741-0750

Fax 218-741-1719

5525 Emerald Avenue

Mountain Iron, MN 55768

[www.nescmn.net](http://www.nescmn.net)

# Table of Contents

---

Company Overview _____	1
Business Services _____	2
Cooperative Purchasing _____	4
Education Services _____	6
Telecommunications & Technology _____	14
Communications & Marketing _____	18
Board of Directors _____	19
Contact Information _____	20
Company Information _____	24



# Company Overview

---

*Northeast Service Cooperative is  
committed to serving  
our members.*

## *Established by the Legislature*

Northeast Service Cooperative (NESC), located in Mountain Iron, Minnesota, was established by the legislature as a nonprofit public corporation. It is one of nine service cooperatives in the state. It operates under State Statute 123A.21.

## *Governance*

NESC is governed by a nine-member Board of Directors of which the majority must be current members of school board elected at large from the NESC area. The remaining members may be representatives of other participating agencies, such as cities, counties, or other governmental agencies.

## *Serving members for more than four decades*

NESC services schools, cities, counties, and other governmental agencies throughout northeastern Minnesota.

## *Programs and Services*

NESC provides an array of niche services including Group Health and Dental Insurance, Medical Spending Accounts, Environmental Health & Safety, Education Services, Telecommunications & Technology, Cooperative Purchasing, Online Learning, Wellness Initiatives, Academic Programs, and Fiscal Hosting.

# Contact

---

Paul Brinkman  
Executive Director  
218-748-7603  
paulb@nescmn.net



# Business Services

---

## *Risk Management*

The Northeast Service Cooperative partners with various providers to form pools to address the needs of schools, cities, counties, governmental agencies, and their employees. The insurance pools provide expanded employee contracts and more effective fiscal control of premiums. All insurance programs are offered in partnership with qualified and reputable providers that are financially sound and capable of delivering the services required. Schools, cities, counties, governmental units and their employees may access these programs at any time:

- Dental
- Medical
- Medical Spending Accounts (HSA, FSA, VEBA)
- Life
- Employee Assistance Program
- Long-Term Disability
- Long-Term Care
- Vision

## *Other Administrative Services*

- Fiscal Host Services
- Grant Management
- Financial Reporting

## Contact

---

Jeanette Mellesmoen  
CFO/Senior Director of Operations  
218-748-7617  
jmellesmoen@nescmn.net



# Business Services

---

## *Environmental Health and Safety*

The Northeast Service Cooperative (NESC) is a partner with the Institute for Environmental Assessment, Inc. (IEA). IEA is a small business founded in 1984. IEA is committed to provide practical, cost-effective environmental safety consulting compliance for private and public organizations. Clients include school districts, hospitals, government agencies, and businesses in a variety of industries throughout the country. IEA experts design and execute solutions that accomplish specific goals of your company. IEA maintains an office at NESC. The contact is Taylor Dickinson, CSP, Regional Manager for Virginia and Brainerd. She may be reached at 218-410-9521 or [taylor.dickonson@ieainstitute.com](mailto:taylor.dickonson@ieainstitute.com). Their website is [www.ieasafety.com](http://www.ieasafety.com).



## *Institute for Environmental Assessment (IEA) Hosts the Following Divisions:*

### **Environmental Project Design and Management**

IEA employs a team of experienced and EPA-certified licensed asbestos inspectors, management planners, site supervisors, project designers, and lead risk assessors. IEA provides asbestos awareness training, demolition surveys, material inspection sampling and assessments, hazardous waste removal and clean-up management plans, AHERA inspections, lead sampling inspection, and project management. They are widely recognized for its knowledge in asbestos and lead project design and management, including AHERA and NESHAP compliance.

### **Indoor Air Quality (IAQ)**

IEA has capabilities to provide comprehensive IAQ assessments and solutions to building owners and managers. Their team of certified industrial hygienists, environmental consultants, public health personnel, and engineers are available to assist in resolving IAQ concerns. IEA can provide investigative mold/moisture assessments, proactive IAQ management, remediation design and monitoring, HVAC performance evaluations, ventilation system commissioning or re-commissioning, and healthcare infection control consulting and design.

### **Environmental, Health and Safety Services**

IEA specializes in custom solutions to EH&S concerns, no matter how big or small. IEA experts will evaluate and provide the best consultation services for your organization.

IEA has trained and experienced personnel able to assist with OSHA, MSHA, DOT, and EPA compliance. Compliance assistance includes program reviews/audits, employee exposure assessments, developing health and safety management plans, and much more.

IEA's staff have access to existing written programs, plans, management systems and proven, time-tested implementation procedures to offer a health and safety compliance team that is poised to provide cost-effective, efficient, and professional compliance services.



## *Revitalization Building Solutions*

Creating collaborative teams to guide our member groups through project planning, facility assessments, building design, and construction management services is an opportunity for all member groups working with InGensa, Inc.

To see what services they offer, visit their website at [www.ingensainc.com](http://www.ingensainc.com).



# Cooperative Purchasing

---



Our Cooperative Purchasing Program (CPC) offers members a wide range of high-quality products and services at discounted rates. By combining the purchasing power of all members, we can achieve volume pricing on quality products and services from reputable vendors. You, the member, can purchase a small quantity and get the large quantity discount.

Visit [www.purchasingconnection.org](http://www.purchasingconnection.org) for a listing of vendors.

For a convenient purchasing experience, visit [www.cpcexpress.org](http://www.cpcexpress.org).

The contracted vendors we have are established through formal bids. Members may access those contracts and satisfy Minnesota competitive bidding requirements - regardless of the amount of the purchase. The ability to do so is outlined in Minnesota Statutes [123A.2](#) and [471.345](#).

Utilizing our purchasing program gives you more buying power and choice in the contracts you can use to save time and money and bring value to your organization. Plus, all the contracts have been awarded through the required competitive process.

## Contacts

Jeanette Mellesmoen  
CFO/Senior Director of Operations  
218-748-7617  
[jmellesmoen@nescmn.net](mailto:jmellesmoen@nescmn.net)



Suzi Ruper  
Senior Coordinator, Member Services  
218-748-7604  
[sruper@nescmn.net](mailto:sruper@nescmn.net)

# Cooperative Purchasing

---

## Athletics

Gym Floor Renovation/New  
Electronic Scoreboards  
Synthetic Field Turf  
Track Surfacing  
Wall Mats for Gymnasiums  
Telescopic Seating  
Athletic Field Press Box  
Outdoor Bleachers  
Athletic Equipment  
Sports Facility LED Lightning  
Lockers & Storage Products

## Office Equipment

Copy Machines  
Printers Color/Black & White  
3D Printers  
Wide Format Printers  
Scanners

## Facilities & Grounds

Floor Cleaning Equipment  
Electronic Recycling Services  
LED Lighting Equipment  
Playground Systems/Equipment  
Precision Lawn Mowers  
Custodial Supplies  
Roofing Solutions  
Carpet/Resilient Flooring  
Resin Concrete Flooring  
Air Filters, Plumbing Supplies  
Recycling/Waste Containers

## Furniture

Classroom Furniture  
Libraries/Media Centers  
General Office  
Lobby/Bathroom  
Ergonomic Furniture  
Senior Living  
Recreational  
Cafeteria Tables

## Instructional Resources

Online Reading Solutions  
eBook Mgmt/Software  
Educational Math Software  
Professional Services

## Classroom Supplies

Early Childhood  
Elementary Classroom  
Middle & High School  
Art Supplies  
Industrial Technology  
Special Needs  
STEM Supplies

## Office Supplies

General Office Supplies  
Breakroom and Kitchen  
Copy Paper/Colored Paper  
Printer Ink Cartridges

## Technology

Computers  
Technology Equipment  
Educational Software  
Amplification Solutions  
Software  
SMART Boards & zSpace  
Access Control  
Voice and Data Infrastructure  
Fire Alarm  
Intrusion Detection/Monitoring  
IP Video Systems

## Health & Wellness

Safety Equipment  
Health & Safety Supplies  
Portable Air Purifiers

## Security

Metal Detectors  
Finger/Palm Capture  
Safety Management Tools  
STOPit Software

## Electronic Content Management

## Food Service & Bread Program

## Online Safety Management

## Mobile Educational Broadband

## Vehicle Auction Services

## Commercial Vehicle Purchasing

## Theatrical/Auditorium Products

## Kitchen Smallwares/Lg Equip

# Education Services

---

Education Services continues to develop its programming and services to best fit our region and make an impact for our educators and students. Although we continue to provide quality facilitation and training services, our workshops have developed to encompass the larger role technology plays in the way business is conducted.

## *Workshops, Trainings & Conferences*

- Teacher/Administrator Development Series
- Facilitating Online Learning
- Creating Online Course Content
- Literacy and Math Cohorts
- Improvement Plan Development

## *Planning, Facilitation and Research Services*

The Northeast Service Cooperative will continue to offer facilitation services to our members. These services are customizable to meet specific needs within an organization. A representative list includes:

- Strategic Planning
- Mediation Services
- Team Building / Leadership Skills / Program Evaluation
- Action Planning / Goal Setting / Data Analysis
- Research Services / Grant Writing
- Meeting Facilitation

NESC provides staff development planning, facilitation, grant research and writing, and program evaluation services for school districts and other NESC members in the region.

## *Grant Writing*

One of the objectives of the Northeast Service Cooperative's mission is to seek out and help our members apply for funding opportunities to support their initiatives.

### *NESC provides services under the following grants:*

- Minnesota Department of Education
- Minnesota Department of Health
- United States Department of Agriculture, Rural Utilities Service
- Center of Excellence
- Department of Employment and Economic Development
- Iron Range Resources and Rehabilitation Board
- Economic Development Administration
- Public Health Workforce supplemental funding from the Center of Disease Control and Prevention, administered by the Minnesota Department of Health
- Minnesota Statewide Longitudinal Education Data System (SLEDS)
- Rural Career and Technical Education (CTE)





# Education Services

## *MSC Online Learning Program Initiatives*

The MSC Online Learning Program is proud to help meet the needs of school districts across the state by providing challenging online learning opportunities for students. Our program is a part-time non-diploma program so students remain enrolled in their home district while taking their online courses. We are approved by the Minnesota Department of Education to offer online courses for middle and high school students.

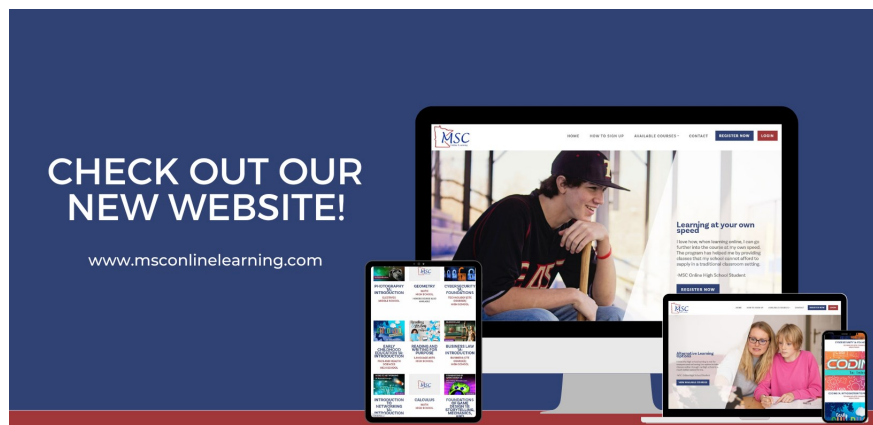


MSC Online continues to utilize Minnesota-approved curriculum providers. Our curriculum offers a wide range of rich multi-media courses that are aligned with national and state standards and several industry certifications under career and technical education. We continue to add new course offerings to help meet the needs of our students, parents, and the school districts we serve. A full list of courses offered by our program is available for your review at [www.msconlinelearning.com](http://www.msconlinelearning.com)

Our course LMS is Moodle. Moodle is an open-source learning platform designed to provide educators, administrators, and learners with a robust and secure learning environment. We continually upgrade to the newest long-term, stable support version of Moodle. Genius (SIS) is our current student information system. Students and teachers will continue to see numerous improvements and course enhancements within each system.

The Northeast Service Cooperative supports the MSC Online Program with designated staff for program direction, administrative support, technical support, and training. The MSC Advisory Council meets throughout the year to provide input and program guidance. We will continue our efforts to make MSC Online Learning the online program of choice for schools in Minnesota.

MSC Online continually explores ways to better market our services to students, parents, and schools across the state. We plan to participate in various professional conferences to share information about how MSC Online can assist students experiencing scheduling conflicts or who are in need of credit recovery, advanced, additional, or specialized courses.



# Education Services

---

## *Academic Enrichment Programs*

The Academic Enrichment Programs coordinated by the Northeast Service Cooperative continues to remain strong as a result of the stability and success of our regional academic teams and students. During the last school year, thousands of students in our region continue to participate in our academic enrichment programs in person.



### ***Knowledge Bowl***

Knowledge Bowl (KB) Interdisciplinary academic competitions for over 1,700 regional students in grades 5-12 from 33 schools are held at NESC. Just under 300 teams of students compete in both written and oral contests that challenge students' recall, problem solving and critical thinking skills while reinforcing core curriculum. Our top six senior high teams advance to a state competition.



### ***Spelling Bee***

Regional spelling competition for students in grades 5-8 is held at NESC. Our top region winner advances to the National Spelling Bee held in Washington, D.C.

## Contacts

---

Tara Lindstrom  
Senior Coordinator, Education Services  
218-748-8111  
tlindstrom@mnce.org



Kijo Stallings  
Coordinator, Education & Student Services  
218-748-7611  
kstallings@nescmn.net

# Education Services

## Northern Pines Regional Center of Excellence

The Northeast Service Cooperative, in partnership with the Minnesota Department of Education, is home to the Northern Pines Regional Center of Excellence (one of six RCEs in the state). The Regional Centers of Excellence (RCE) provided support directly to regional districts and schools to strengthen local capacity to facilitate school improvement efforts focused on equity of underserved populations.

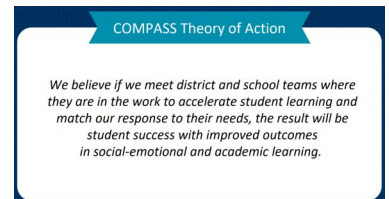


A Partnership Between the Minnesota Department of Education and Minnesota Service Cooperatives

The Northern Pines RCE has been collaborating with MDE along with the eight other service cooperatives in the state to participate in a new initiative called Collaborative Minnesota Partnership to Advance Student Success (COMPASS). COMPASS is a statewide education system created through a collaboration between the Minnesota Department of Education (MDE), Minnesota Service Cooperatives (MSC) and Regional Centers of Excellence (RCE). COMPASS is designed to meet schools and districts where they are in the work to accelerate student learning and match the state's response to those needs. Throughout the 2024-25 school year and beyond, educators, school staff, and school leaders will have new opportunities for professional learning and coaching, along with support from experts. NESC will be expanding its RCE staff to include a regional supervisor and staff who will be serving the region as math leads and coaches, an MnMTSS lead, an equitable access specialist with special education focus, literacy coaches, culturally responsive instructional leadership lead, and school advocates. Hiring is in process with positions to begin July 1, 2024.

MDE is partnering with the Regional Centers of Excellence and the Minnesota Service Cooperatives on the focus areas of:

- Data and Assessment Literacy
- Literacy
- Math
- School Climate and Mental Health



The RCE team members support regional districts and schools with on-site coaching, technical assistance, professional development, resources, and networking opportunities with the ultimate goal of eliminating gaps and inequities while improving outcomes for all students.

## Ten Minnesota Commitments to Equity

1. Prioritize equity.
2. Start from within.
3. Measure what matters.
4. Go local.
5. Follow the money.
6. Start early.
7. Monitor implementation of standards.
8. Value people.
9. Improve conditions for learning.
10. Give students options.

## Contact

Tara Lindstrom  
Senior Director, Education Services, and COMPASS Regional Supervisor  
218-748-8111  
tlindstrom@mnce.org



# Education Services

---

## *Career & Technical Education (CTE)*

### **VISION STATEMENT:**

Equity - Opportunity - Flexibility

### **MISSION STATEMENT:**

Connecting learners with careers while promoting equity, opportunities, and flexibility for students and schools.



In 2024, the Northeast Service Cooperative's Career & Technical Education (CTE) program will continue to promote our vision of equity, opportunity, and flexibility for students and schools. The program focused on providing a diverse range of CTE courses and opportunities that catered to the needs and interests of all students, regardless of background or ability.

Through partnerships with local businesses, the program offers real-world experiences, internships, and mentorship opportunities, ensuring students are prepared for success in their chosen career paths. Additionally, the program emphasized flexibility by offering online and hybrid CTE courses, allowing students to access high-quality education regardless of location or circumstances.

The Northeast Service Cooperative's CTE program remains committed to equity by actively working to eliminate disparities in student access and achievement. By providing equitable access to resources, support, and opportunities, the program aims to ensure that all students have the chance to thrive and success in their educational and career endeavors.

In partnership with the Minnesota Service Cooperative (MSC), the Northeast Service Cooperative (NESC) is dedicated to providing opportunities for regional students through funds from the MN Service Collaborative Rural CTE Grant. In 2024 and 2025, NESC plans to allocate over \$700,000 from the grant to support its CTE courses, programs, students, and teachers. These programs aim to promote post-graduation outcomes aimed at enrollment, enlistment, or employment, ensuring students are well-equipped for success in their chosen path. This partnership reflects NESC's commitment to enhancing educational opportunities and outcomes for students in the region.

# Education Services

---

## Career and Technical Education for All

The Minnesota Service Cooperatives Career and Technical Education Consortium and the Northeast Service Cooperative are committed to strengthening their relationships with each other and our education, economic development, and workforce agency partners.



## The Minnesota Service Cooperative

**Mission:** Leveraging statewide and regional approaches to ensure robust CTE experiences for students with an eye on future success.

**Vision:** All students have access to innovative, career-connected learning through a vibrant CTE education network with solid industry connections, providing students with the knowledge and skills needed for the future.

## We support and develop:

- Accessible, equitable, and inclusive career-connected learning that builds pathways to local/regional careers for all students.
- Highly trained and engaged educators who help students build CTE pathways through relevant coursework, collaborative partnerships, and advanced equipment.
- Advanced collaboration with business, industry, labor, workforce, and higher education fosters innovation, harnesses creativity, and accelerates quality CTE learning/pathways.
- Integrated and aligned efforts that enhance and sustain quality CTE.

## Together we work towards a future where:

- All students have access to innovative, career-connected learning showcasing local careers.
- Minnesota has a vibrant CTE teacher network with strong industry connections.
- Business, labor, and industry are key to student career awareness and life/work skills.
- Education recognizes the benefit of CTE courses/experiences for all careers.
- Students make informed financial investments in post-secondary training and education.
- Public and private investments in CTE help address workforce challenges across Minnesota.

# Education Services

Making a regional impact across the state:

## Career & Technical Education for *All*



**Food Processing**  
Kelliher FFA and Cattle Company students practice hands-on cutting, handling, packaging, and sanitation aspects of food processing.



**Videography**  
Chisholm High School students build technical skills at state-of-the-art digital lab at the MN Discovery Center.



**CTE Teacher Licensure/Induction**  
Over 300 teachers across Minnesota receive support through licensure preparation, induction, and mentoring.



**Healthcare Careers**  
Essentia Health provides first-hand career experiences for students. "I got to experience spinal surgery and see how nurses interact with patients!" (Pequot Lakes Student)



**Student-Run Business**  
Watertown-Mayer develops a student-run screen-printing business supported by a local graphic designer, area businesses, and booster club.



**Business Partnerships**  
LYFT Pathway partnerships with businesses such as Kibble Equipment in Wabasso provide students with real-world skills and employment opportunities.



**Intermediate School Districts**  
Launch funding for innovative CTE programming that removes barriers for students.



**Construction/Manufacturing**  
Gibbon-Fairfax-Winthrop Thunderbird Manufacturing students put their construction and welding skills to use building cabins for local county parks.



**SE Welding Competition**  
123 students from 21 schools participate in the first Southeast MN Welding Competition. Rochester Community & Technical College gains four students for their PSEO Welding program through the competition.

## Contact

John Engelking  
Senior Regional Manager, Career & Technical Education (CTE)  
218-390-9860  
jengelking@nescmn.net



# Education Services

---

## *Behavioral and Mental Health Services*

Mental health is essential to overall physical health, wellbeing, and cognitive development. Behavioral and Mental Health Services continues to develop programming and services to best fit the needs of our region. We remain committed to mental health literacy, workforce mental health and wellbeing, workforce development, and collaboration.

### Mental Health Literacy

Mental Health Literacy is the knowledge and beliefs people have about mental wellbeing and mental health disorders which plays a large role in prevention, awareness, management. NESC focuses on:

- Education for how to obtain and maintain positive mental health,
- Education on mental health disorders and their treatments,
- Mental Health Campaigns designed to reduce stigma related to talking about mental health and mental health disorders, and
- Programming to increase knowledge of when and where to seek help.

### Workforce Mental Health and Wellbeing

with efforts focused on the mental health and wellbeing of organizations:

- Research Services
- Data Analysis,
- Strategic Planning,
- Improvement planning,
- Implementation Planning
- Improvement Plan
- Program Evaluation
- Grant Writing
- Meeting Facilitation
- Customizable Trainings

### Workforce Development

- Increased access to critical mental health services.

### Collaboration

We are working with our regional, state, and national partners to make systemic changes including policy, institutional, and individual changes in how we view and prioritize mental health.

## Contact



Aubrie Hoover  
Regional Manager, Behavioral and Mental Health Services  
218-748-7618  
ahoover@nescmn.net

Lisa Kvas  
Regional Coordinator, Mesabi Behavioral Health Network and NESC Planning and Development  
218-748-7613/ lkvas@nescmn.net

# Telecommunications & Technology

---

Our Telecommunications and Technology (TnT) division plays an essential role at the Northeast Service Cooperative and working with members to find solutions and form plans for efficient and effective operations. The TnT team designs, develops, supports, and manages networks. We train our staff to be at the cutting edge of technology and telecommunications in order to provide expertise and valuable information to our members.

## Services

- Network Services
  - ◇ Ethernet Transport: Transport for point-to-point and point-to-multipoint connections
- Broadband Internet Services
  - ◇ Ethernet: Direct Internet access from local central office
- Space and Power Services
  - ◇ Collocation: Rack and floor space, back-up power and storage
- Leaded Fiber Services
  - ◇ Dark Fiber: Unit fiber for point-to-point connections
- Professional Services
  - ◇ Information Technology
    - Project Management
    - Strategic Planning
    - Engineering/Design
    - Network Support/Administration
    - Installation & Repair
    - Remote Support
    - Records
  - ◇ Telecommunications
    - Project Management
    - Engineering/Design-Large Scale
    - Engineering/Design-Small Scale
    - Installation & Repair
    - Testing
    - Records & Mapping
  - ◇ Administration
    - Project Coordinator
    - Scheduling/Dispatch
    - Purchasing/Inventory
    - Service Order & Ticket Management





# Telecommunications & Technology

---

## *Network Operations Center (NOC)*

1-866-306-3926

[support@nescmn.net](mailto:support@nescmn.net)

Our daytime hours of operation are from 8 a.m. to 4 p.m. There is access to someone on call 24 hours a day, seven days a week, by calling or email.

### *Call Routing:*

The call is answered by one of our TnT staff on duty, unless excessive call volume necessitates a call be routed through the voicemail. Callers have the option to leave a message which creates a ticket in our ticketing system.

### *Technical Support:*

We have experienced technical staff available to troubleshoot issues.

### *Network Monitoring:*

Critical systems are monitored 24 x 7 by our Network Management system. We have a live response support system in place, where members can manage and track internal incidents / troubles.

## *Northeast Fiber Network*

The Northeast Fiber Network is a fiber optic network that spans across northern Minnesota in the counties of St. Louis, Lake, Cook, Koochiching, Carlton, Pine, Itasca, and Aitkin. It was designed by the Northeast Service Cooperative to serve unserved and under-served regions in northeastern Minnesota. The network serves critical service sites including schools, libraries, sovereign nations, counties, cities, health care, and state entities. We also have dark fiber, wavelength services available to the public sector and to private sector service providers. The network provides 2.8 Terabit current core switching capacity using DWDM technology. There are Optical Transport Network facilities across the region with collocation availability.

- \$43.5 million federally funded project
- 50% grant / 50% loan through the United States Department of Agriculture Rural Utilities Service
- More than 1,220 miles of fiber optic network in the counties of St. Louis, Cook, Lake, Pine, Itasca, Koochiching, Carlton, and Aitkin
- Approximately 685 critical service sites connected
- Additional expansion under the EDA grant of 136 miles of fiber optic plant construction underway



# Telecommunications & Technology

---

## *Border-to-Border Broadband Development Project*

This project utilized the Northeast Fiber Network to expand 70 miles of fiber network into underserved and unserved regions in St. Louis County. The NESC/Frontier Border to Border Phase I Broadband Project leverages funding from the Department of Employment and Economic Development (DEED) and Iron Range Resources and Rehabilitation Board (IRRRB). The fiber to the node equipment upgrade by Frontier Communications exceeded project goals of increasing capacity to 877. As part of this project, 30 township hall and fire halls are connected with high-speed connectivity and wireless access.

- \$4.35 million state funded project
- 45% DEED funded, 35% IRRRB funded and 20% NESC match
- Approximately 70 miles of fiber network in St. Louis County
- Provides middle mile fiber to Frontier Communications that impacts at least 877 households.
- Provides direct connectivity to rural town halls and fire halls

## *NE MN Broadband & Economic Development Initiative*

The Department's Economic Development Administration (EDA) awarded a \$3.4 million CARES Act Recovery Assistance grant to support broadband expansion in Northeast Minnesota.

The pandemic shed light on the vital importance of broadband. This grant will allow Northeast Service Cooperative to meet the region's explosive demand for broadband connectivity to boost businesses, provide new opportunities and diversify the region's economy. The project consists of two main components: middle-mile fiber optic infrastructure and last-mile fiber optic service connections to businesses within Opportunity Zones & other locations across the NE region of MN. The middle-mile portion of the project will extend Northeast Service Cooperative's Fiber Network to other statewide fiber networks and wholesale bandwidth providers. This will increase the region's broadband capacity to 200Gbps. The last-mile component will install fiber optic, Gigabit broadband services to businesses across northeast Minnesota. This EDA grant, to be matched with \$835,000 in local funds, is expected to generate \$20 million in private investment.

- \$4.175 million federal funded project.
- 80% US EDA funded and 20% NESC match.
- Approximately 136 miles of fiber network in Aitkin, Pine, Kanabec, Isanti & St. Louis counties (expansion includes Barnum to Aitkin, Virginia and Hibbing sections, and Willow River to Cambridge)
- Diverse & redundant interconnection points to wholesale providers in Minneapolis and Fargo/Moorhead.
- Last mile Gigabit fiber optic broadband services to over 100 businesses.
- Groundbreaking was held in April 2024 and construction is scheduled to be completed by summer 2025.

## *Innovation in Technology*

As part of striving for excellence in service in the region and for our members, the TnT team at NESC reviews opportunities and ways to expand networking and technology.

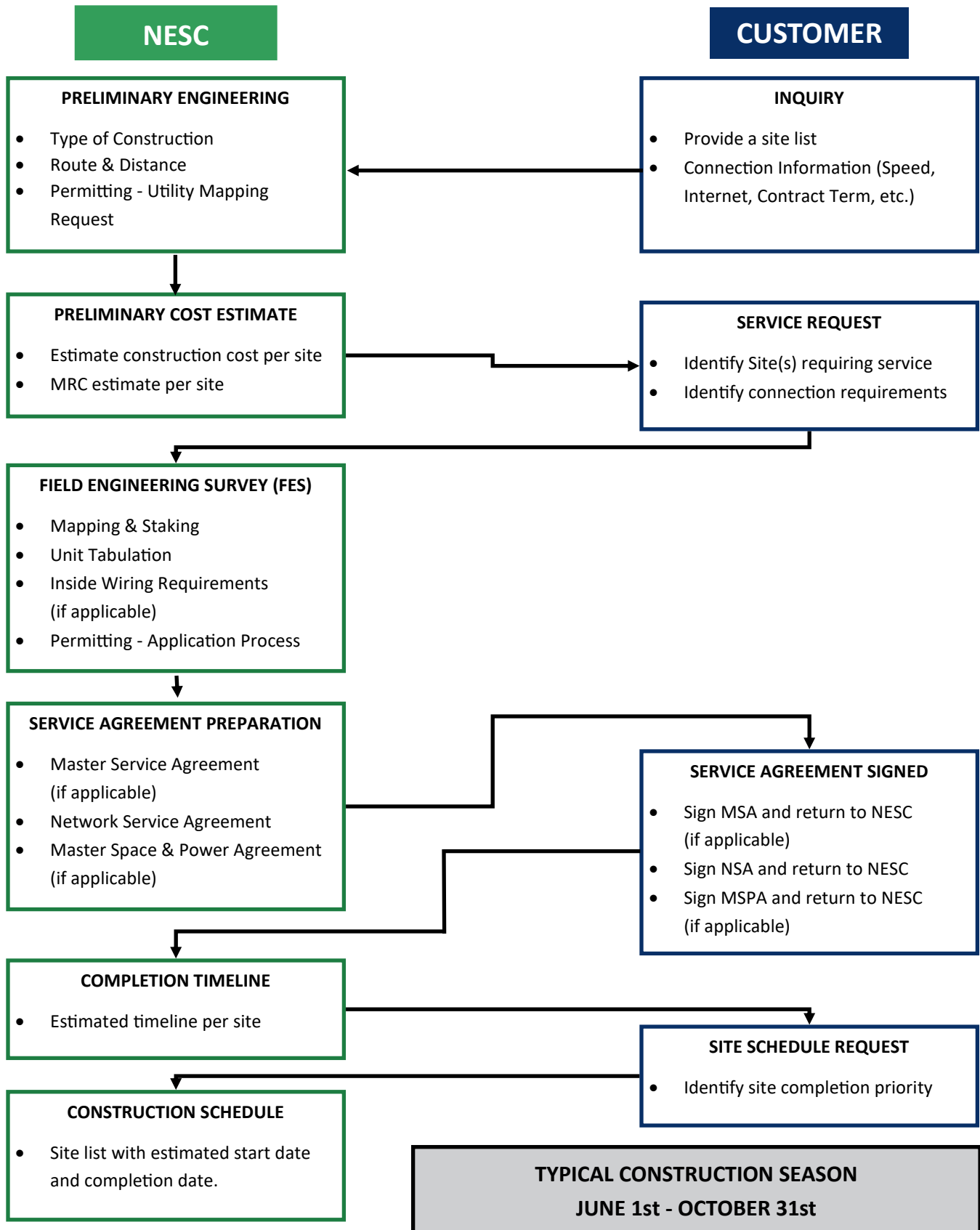
## Contact

---

Joe Weber  
Operations Manager, Telecommunications & Technology (TnT)  
218-748-7626  
jweber@nescmn.net  
16



# Telecommunications & Technology



# Communications & Marketing

---

## *Annual Plan*

The Northeast Service Cooperative (NESC) publishes an Annual Plan which provides members with an overview of services and programs. We also highlight our services, members, and programs through emails, publications, handouts, and our website.

The Annual Plan is published on June 1 and posted on NESC's website [www.nescmn.net](http://www.nescmn.net).

## *Wellness Initiatives*

NESC participates in conferences, conventions, and distributes newsletters as a way to connect with members and promote initiatives. Wellness has become a focus as NESC cares about the wellness of its members. We will continue to meet with our members and offer trainings, workshops, and information in the upcoming year.

## *Follow Us*

NESC is on Facebook and LinkedIn. Our website underwent a major renovation this winter for a fresh updated and easier to use site.

## Contact

---

Sharon Haavisto  
Senior Coordinator, Administration, Marketing & Human Resources  
218-748-7624  
[shaavisto@nescmn.net](mailto:shaavisto@nescmn.net)



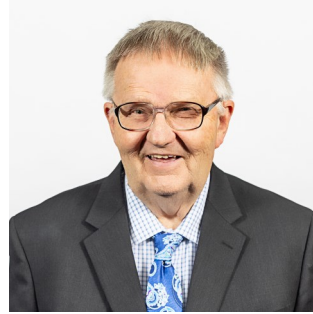
# Board of Directors

---



**John Berklich**

Board Chair  
ISD #701  
Hibbing



**Walt Hautala**

Vice Chair  
ISD #2711  
Mesabi East



**Julie Peterson**

Clerk  
ISD #97  
Moose Lake



**Bob Rahja**

Treasurer  
ISD #695  
Chisholm



**Tim Riordan**

Director  
ISD #2909  
Rock Ridge



**John Klarich**

Director  
ISD #696  
Ely



**Kerry Juntunen**

Ex-Officio  
ISD #704  
Proctor



**Susan Kaslow**

Director  
Hill City



# Contact Information

---

The Northeast Service Cooperative employs a dedicated, committed staff.



**Paul Brinkman**  
Executive Director &  
Interim Sr. Director of  
Telecom & Technology  
(TnT)  
Tel 218-748-7603  
[paulb@nescmn.net](mailto:paulb@nescmn.net)



**Stephanie Allan**  
TnT Telecommunica-  
tions Specialist  
Tel 218-748-7625  
[sallan@nescmn.net](mailto:sallan@nescmn.net)



**Karen Butkovich**  
Fiscal Services  
Accountant II  
Tel 218-748-7607  
[kbutkovich@nescmn.net](mailto:kbutkovich@nescmn.net)



**Gina Cole**  
COMPASS MnMTSS  
Lead  
Tel 218-410-2430  
[gcole@mnce.org](mailto:gcole@mnce.org)



**Alyssa Dahlke**  
Fiscal Services  
Accounting Coordinator  
Tel 218-748-7636  
[adahлке@nescmn.net](mailto:adahлке@nescmn.net)



**Russ Davidson**  
Education Services  
Math Specialist  
Tel 218-260-8393  
[rdavidson@nescmn.net](mailto:rdavidson@nescmn.net)



**Andrew Doll**  
TnT Telecommunica-  
tions Specialist  
Tel 218-748-7610  
[adoll@nescmn.net](mailto:adoll@nescmn.net)



**John Engelking**  
CTE Senior Regional  
Manager  
Tel 218-390-9860  
[jengelking@nescmn.net](mailto:jengelking@nescmn.net)

# Contact Information

---



**Frank Germ**

Building & Grounds  
Manager

**Tel 218-748-7612**

[fgerm@nescmn.net](mailto:fgerm@nescmn.net)



**Lisa Grundstrom**

Education Services  
Education Specialist

**Tel 218-966-5849**

[lgrundstrom@nescmn.net](mailto:lgrundstrom@nescmn.net)



**Sharon Haavisto**

Administration,  
Marketing & Human  
Resources Senior  
Coordinator

**Tel 218-748-7624**

[shaavisto@nescmn.net](mailto:shaavisto@nescmn.net)



**Aubrie Hoover**

Behavioral and Mental  
Health Services  
Regional Manager

**Tel 218-748-7618**

[ahoover@nescmn.net](mailto:ahoover@nescmn.net)



**Kathy Jankila**

Fiscal Services  
Senior Accountant II

**Tel 218-748-7627**

[kjankila@nescmn.net](mailto:kjankila@nescmn.net)



**Sarah Klyve**

COMPASS Equitable  
Access Specialist SPED

**Tel 218-750-0286**

[sklyve@mnce.org](mailto:sklyve@mnce.org)



**Lisa Kvas**

Regional Coordinator  
for Mesabi Behavioral  
Health Network & Plan-  
ning & Development

**Tel 218-748-7613**

[kvas@nescmn.net](mailto:kvas@nescmn.net)



**Tara Lindstrom**

Education Services  
Senior Director and  
COMPASS Regional  
Supervisor

**Tel 218-748-7614**

[tlindstrom@mnce.org](mailto:tlindstrom@mnce.org)

# Contact Information

---



**Amy Maki**

COMPASS Regional  
Literacy Lead

Tel 218-750-4574

[amaki@mnce.org](mailto:amaki@mnce.org)



**Jeanette  
Mellesmoen**

CFO/Director of  
Operations

Tel 218-748-7617

[jmellesmoen@nescmn.net](mailto:jmellesmoen@nescmn.net)



**Jonelle  
Mellstrom**

COMPASS Advocate  
Point

Tel 218-410-7715

[jmellstrom@mnce.org](mailto:jmellstrom@mnce.org)



**Renae  
Nesburg-Busse**

COMPASS Culturally  
Responsive Instructional  
Leadership Lead

Tel 218-421-4010

[rbusse@mnce.org](mailto:rbusse@mnce.org)



**Greg Peterson**

IT Network Architect

Tel 218-748-7608

[gpeterson@nescmn.net](mailto:gpeterson@nescmn.net)



**Marlo Peterson**

Consumer-Directed  
Business Consultant

Tel 952-393-2796

[mpeterson@nescmn.net](mailto:mpeterson@nescmn.net)



**Richard Pfeifer**

Information Technology  
Specialist, Support

Tel 218-748-7628

[rpfeifer@nescmn.net](mailto:rpfeifer@nescmn.net)



**Dustin Smither**

Information Technology  
Specialist, Operations

Tel 218-748-7633

[dsmither@nescmn.net](mailto:dsmither@nescmn.net)



# Contact Information

---



## **Kijo Stallings**

Education & Student  
Services Coordinator

**Tel 218-748-7611**

[kpulford@nescmn.net](mailto:kpulford@nescmn.net)



## **Teresa Rautiola**

IT Network  
Administrator

**Tel 218-748-7616**

[trautiola@nescmn.net](mailto:trautiola@nescmn.net)



## **Suzi Ruper**

Member Services  
Senior Coordinator

**Tel 218-748-7604**

[sruper@nescmn.net](mailto:sruper@nescmn.net)



## **Lauren Sterk**

Fiscal Services  
Insurance Pool &  
Business Office Analyst

**Tel 218-748-7622**

[lsterk@nescmn.net](mailto:lsterk@nescmn.net)



## **Joe Weber**

TnT Operations  
Manager

**Tel 218-748-7626**

[jweber@nescmn.net](mailto:jweber@nescmn.net)

# Company Information

---



## **Northeast Service Cooperative**

5525 Emerald Avenue  
Mountain Iron, MN 55768

**Tel** 218-741-0750

**Fax** 218-741-1719

[www.nescmn.net](http://www.nescmn.net)

## Annual Plan Contact

---

Sharon Haavisto  
Senior Coordinator, Administration, Marketing & Human Resources  
218-748-7624  
shaavisto@nescmn.net

